

SONGLE RELAY

	RELAY ISO9002	SRG
---	---------------	-----



1. MAIN FEATURES

- High contact capacity : 10A
- UL/CSA, TUV recognized.
- Employment of suitable plastic materials to be applied to high temperature and various chemical solution.
- Sealed types available.

2. APPLICATIONS

- Home appliance, air conditioner, heater, etc.
- Automotive Power-window, car antenna, door-lock, etc.
- Office machine, facsimile, etc.
- Vending machine.
- Remote control TV receivers, monitor displays, audio equipment

3. ORDERING INFORMATION

SRG	XX VDC	S	L	C
Model of relay	Nominal coil voltage	Structure	Coil	Contact form
SRG	03!05!06!09!12! 18!24!48VDC	S:Sealed type	L:0. 36W	A:1 form A
		F:Flux free type	D:0. 45W	B:1 form B C:1 form C

4. RATING

10A/250VAC 30VDC

10A/120VAC 30VDC

CCC FILE NUMBER:CQC03001003731 10A/250VDC

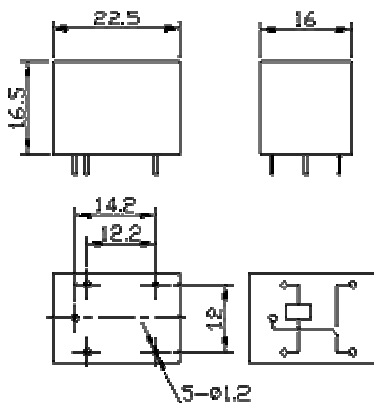
UL/CUL FILE NUMBER: E167996 10A/125VAC 28VDC

TUV FILE NUMBER: R50056114 10A/250VAC 30VDC

5. DIMENSION (unit:mm)

DRILLING (unit:mm)

WIRING DIAGRAM



6. COIL DATA CHART (AT20 ° C)

Coil Sensitivity	Coil Voltage Code	Nominal Voltage (VDC)	Nominal Current (mA)	Coil Resistance (Ω) □	Power Consumption (W)	Pull-In Voltage (VDC)	Drop-Out Voltage (VDC)	Max-Allowable Voltage (VDC)
SRG (High Sensitivity)				10%	abt. 0.36W	75% Max.	10% Min.	130%
	03	03	120	25				
	05	05	71	70				
	06	06	60	100				
	09	09	40	225				
	12	12	30	400				
	24	24	15	1600				
48	48	7.5	6400					
SRG (Standard)	03	03	150	20	abt. 0.45W	75% Max.	10% Min.	130%
	05	05	89	56				
	06	06	75	80				
	09	09	50	180				
	12	12	37.5	320				
	18	18	25	720				
	24	24	18.7	1280				
48	48	10	4500	abt. 0.51W				

7. CONTACT RATING

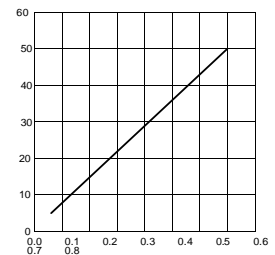
Item	Type	SRG
Contact Capacity		10A 30VDC
Resistive Load (cosΦ=1)		15A 120VAC 10A 250VAC
Inductive Load (cosΦ=0.4L/R=7msec)		5A 240VAC 5A 28VDC
Rated Carrying Current		10A
Max. Allowable Voltage		250VAC, 110VDC
Max. Allowable Current		10A
Referenced Min. Applicable Load		5VDC, 10mA
Contact Material		AgCdo

8. PERFORMANCE (at initial value)

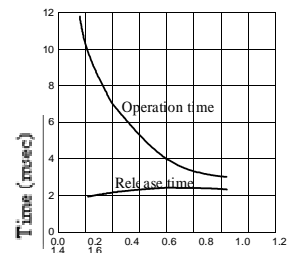
Item	Type	SRG
Contact Resistance		100mΩ Max.
Operation Time		10msec Max.
Release Time		5msec Max.
Dielectric Strength	Between coil & contact	1500VAC 50/60HZ (1 minute)
	Between contacts	1000VAC 50/60HZ (1 minute)
Insulation Resistance		100 MΩ Min. (500VDC)
Max. ON/OFF Switching	Mechanically	300 operation/min
	Electrically	30 operation/min
Operating Ambient Temperature		-30°C to +70°C
Operating Humidity		45 to 85% RH
Vibration Endurance	Error Operation	10 to 55HZ Double Amplitude 1.5mm
	Shock Endurance	100G Min.
Life Expectancy	Mechanically	10 ⁷ operations. Min.
	Electrically	10 ⁵ operations. Min.

9. REFERENCE DATA

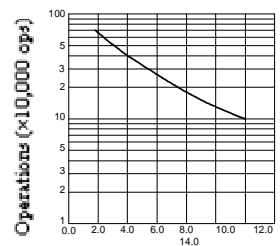
Coil Temperature Rise



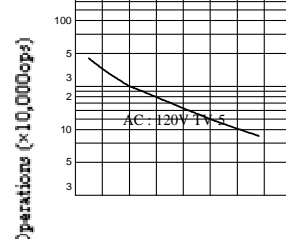
Coil Power (W) Operation Time



Coil Power (W) Life Expectancy AC120V/DC24V cosΦ=1



Current of Load (A) for SRU Life Expectancy



Weight	abt. 11grs.
--------	-------------